

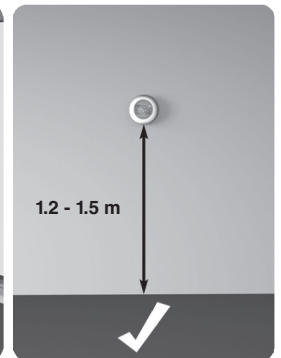


EN | Installation Guide

Y87RF
Single Zone Thermostat

Installation Instructions

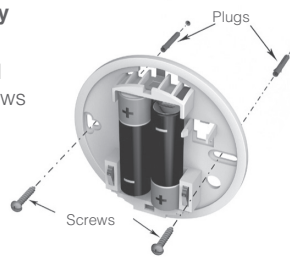
1. **Locate the thermostat in a suitable location:**



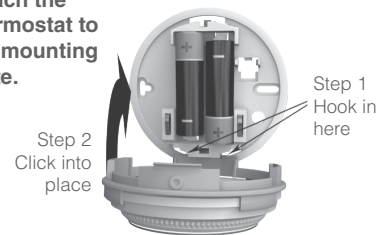
2. **First remove the dial.**



4. **Mount directly to the wall.**
The plugs and mounting screws required are supplied.

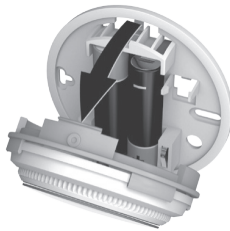


6. **Attach the thermostat to the mounting plate.**

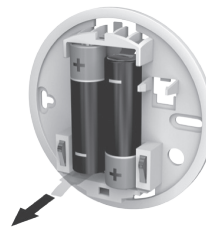


3. **Unclip the mounting plate.**

Press the top of the thermostat downwards, pull it loose and tilt forwards.



5. **Remove the protective tab between the batteries.**



7. **Replace the dial.**



Binding

Before the Single Zone Thermostat can communicate with other RF devices it must be bound to them.

Attention: if the Single Zone Thermostat is replaced, the other RF equipment must have their bindings reset in order to allow the replacement product to be bound.

Touch zones.

There are two touch zones just below the thermostat display, which are used to access menus and functions.



1. **First put the other RF device into binding mode. You may need to cancel or reset any prior binding information.**

Note: for more information about binding modes, see the instructions supplied with the other RF device.

2. **You can now bind the Single Zone Thermostat. Touch and hold on the left touch zone for approximately 10 seconds**



3. **The screen now flashes bo.**



Rotate the dial one click clockwise until it flashes Co – this is the binding mode for binding to Evotouch.

By rotating the dial, other binding modes are accessible:

- a) bo for binding to boiler relays/controls like BDR91 or R8810.
- b) Hc for binding to an underfloor heating control like HCE80/HCC80

4. **When the required symbol is flashing, briefly touch the left touch zone on the Single Zone Thermostat to send the binding signal, at which point the ☺ symbol will flash several times.**

Installation Menu

The Thermostat has an Installation Menu that is used to set the minimum and maximum temperature limits and the off temperature setting.

Maximum and minimum temperatures:

The maximum temperature you can set your thermostat to is 35°C and the minimum is 5°C.

The off temperature:

If the thermostat is operated remotely, this is the temperature value that is used when it is switched off from the remote app.

Activate the Installation Menu as follows:

1. Rotate the setting ring fully to the left until the minimum value is shown. When the value starts flashing, touch and hold on both left and right touch zones for approximately 10 seconds.



2. The maximum temperature limit is now displayed. The setting can be changed using the setting ring. There is no need to confirm the value.



3. While this setting is flashing, touch the left touch zone briefly to display the minimum temperature limit. This can also be changed using the setting ring.



4. Touch the left touch zone to display the off temperature setting. Change this using the setting ring as before.



5. The Installation Menu closes automatically 10 seconds after the last action.

For support:

Resideo

200 Berkshire Place
Winnersh Triangle, Berkshire
RG41 5R
Phone: 0300 130 1299



Pittway Sarl, Z.A. La Pièce 4,
1180 Rolle, Switzerland

www.resideo.com Country of origin : UK

© 2020 Resideo Technologies, Inc. All rights reserved.

The Honeywell Home trademark is used under license from Honeywell International Inc.
This product is manufactured by Resideo Technologies, Inc. and its affiliates.



(EU) 811/2013



Printed in EU.

Approvals:

Hereby, **Pittway Sarl** declares that the radio equipment type **Y87RF** is in compliance with Directive 2014/53/EU. The full text of the EU declaration of conformity is available at the following internet address: <https://hwlhome.co/DoC>
RF (868MHz): Receiver Category 2, Max RF Power 25mW, 868–868.6MHz (868.3MHz)